

The background of the slide is a photograph of the EPFL campus in Lausanne, Switzerland. It shows modern university buildings, a large lake (Lac de la Cluse), and distant mountains under a cloudy sky. A large red rectangle is overlaid on the right side of the image, and a blue rectangle is overlaid in the lower-middle section.

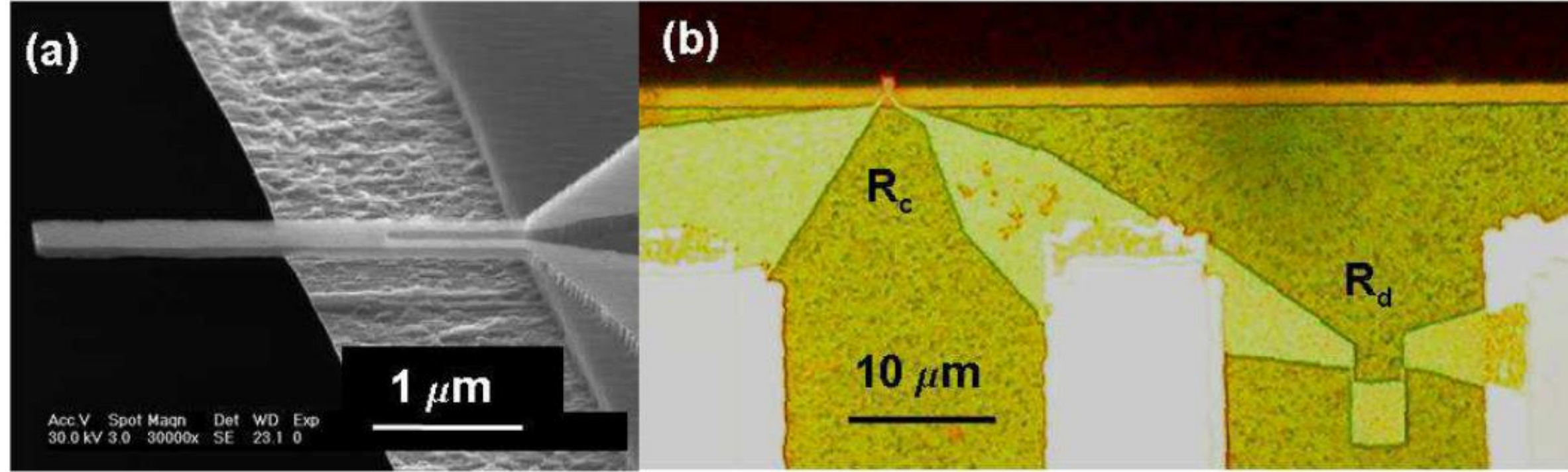
Paper 1 – Discussion

ME-426 – Micro/Nanomechanical Devices

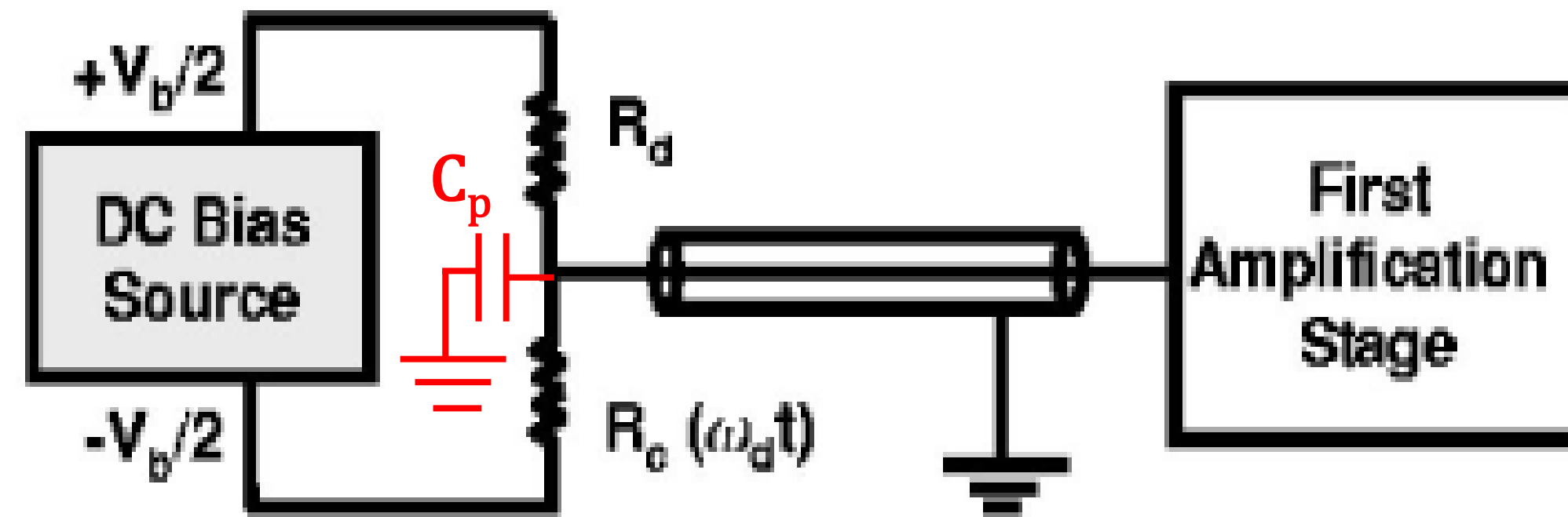
Prof. Guillermo Villanueva

- How are the cantilevers made?
- What are the cantilevers used for?
- What is the Johnson and Thermomechanical noise?
- Measurements at low temperature?
- Why is there a problem at high frequencies?
- Where C_{par} coming from?
- Where is the cross-talk coming from?
- What is downmixing?
- Why is the peak signal 1000 times smaller in one case than in another?
- How big can δf be?
- Why is the noise in some cases much larger than expected?

EPFL Discussion

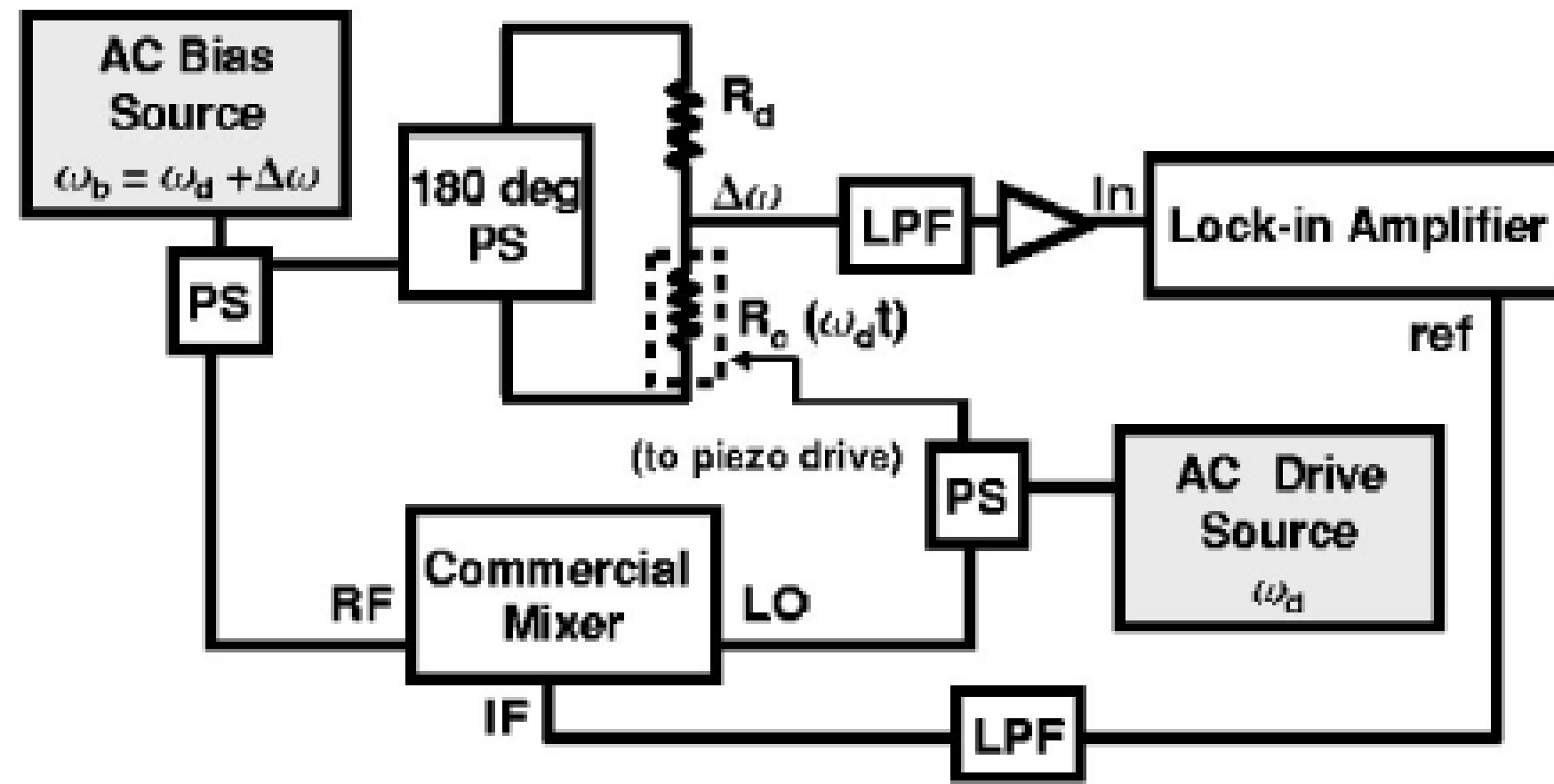


EPFL Discussion

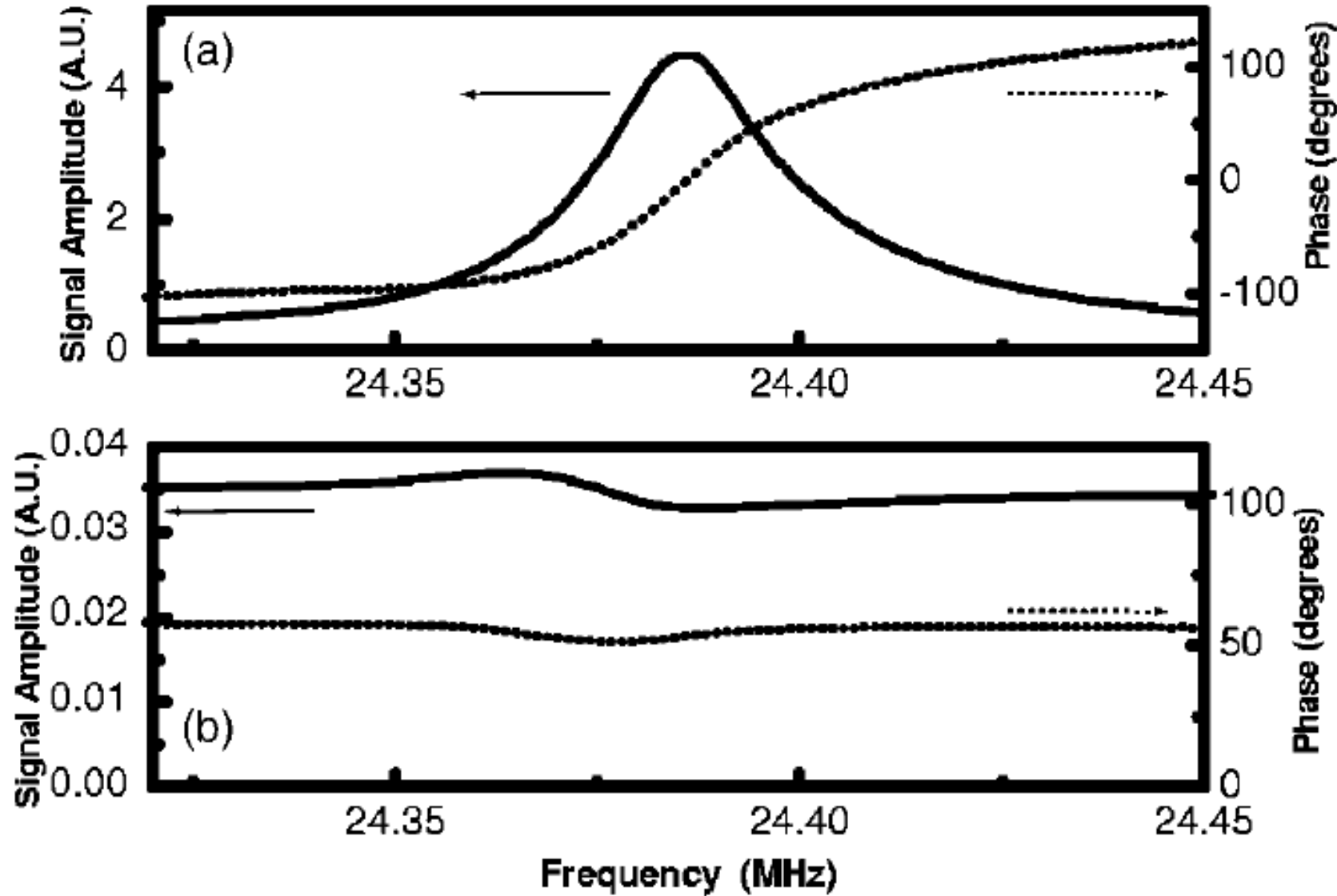


EPFL Discussion

EPFL Discussion



EPFL Discussion



EPFL Discussion

